



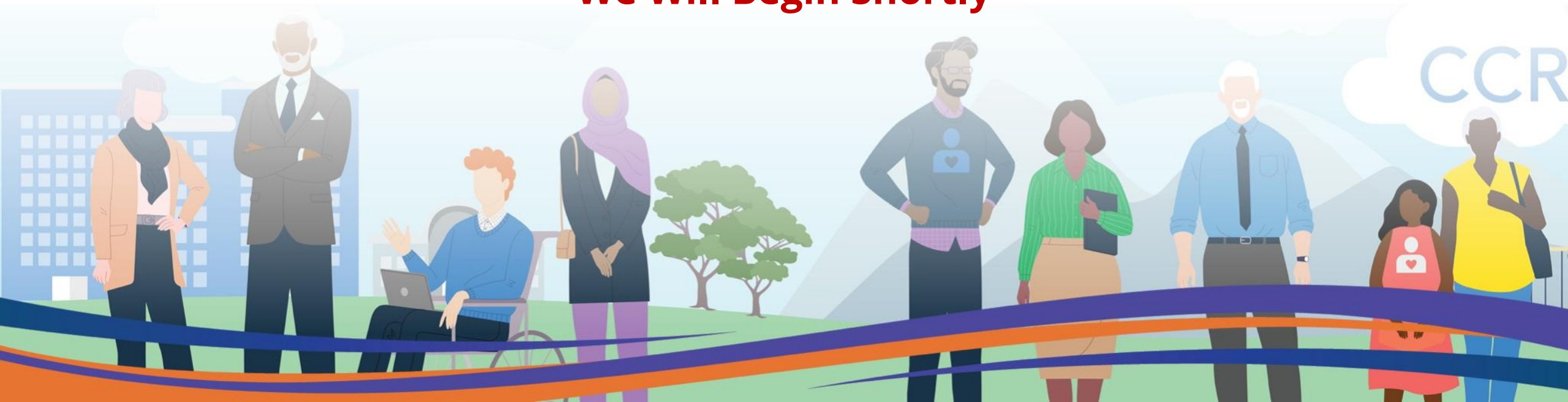
Presents

LIVING IN A WORLD OF COVID

What is the CHW role in the pandemic now,
and what do COVID-19 community conversations look like?

10.27.22

We Will Begin Shortly





translation controls

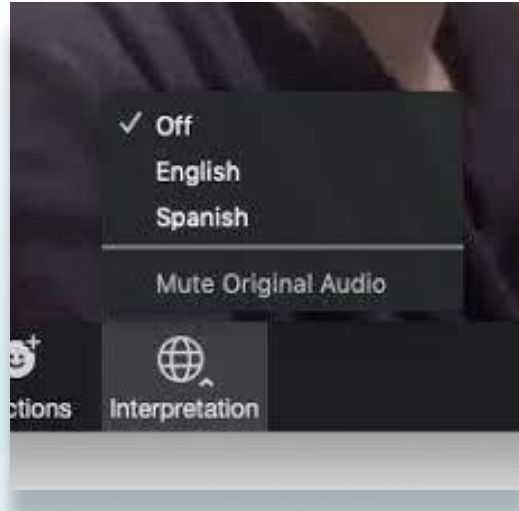
For spanish translation:

In your meeting/webinar controls, click Interpretation

Click the language that you would like to hear.

(Optional)

To hear the interpreted language only, click “Mute Original Audio”



Para traducción al español:

Haz clic en “Interpretación” en la configuración/controles de la reunión

Elija su idioma preferido

(Opcional)

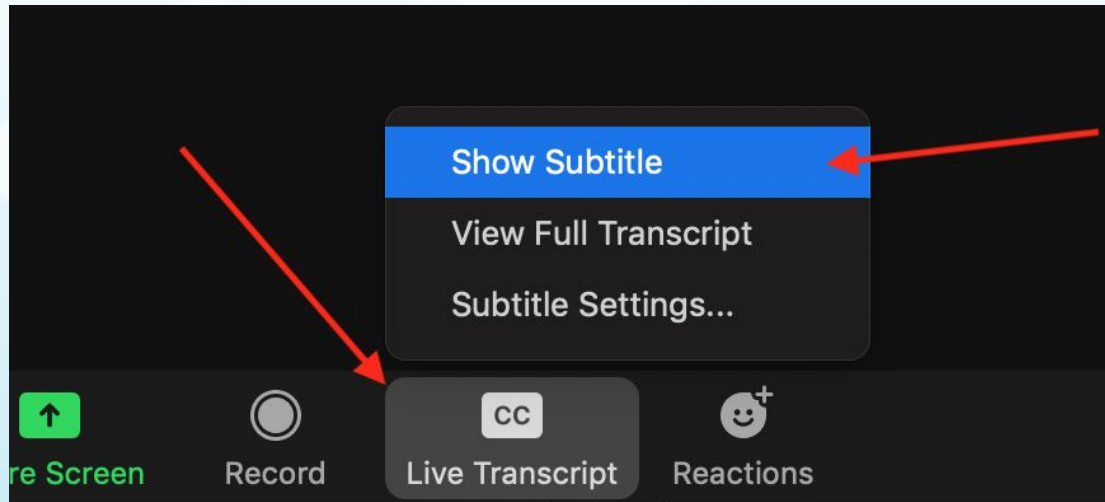
Para escuchar solo el idioma interpretado, haga clic en “mute original audio (silenciar audio original)”



closed captioning

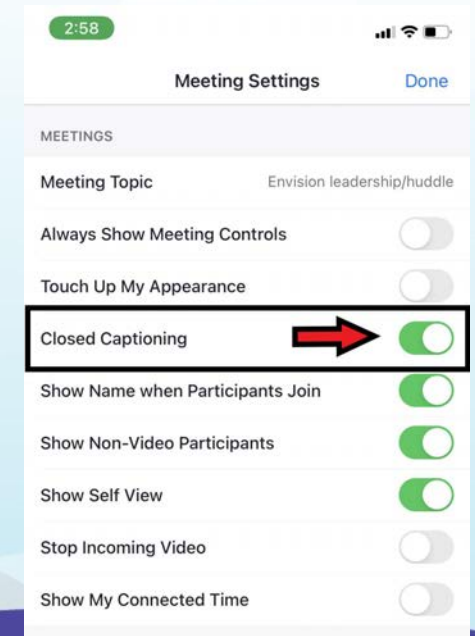
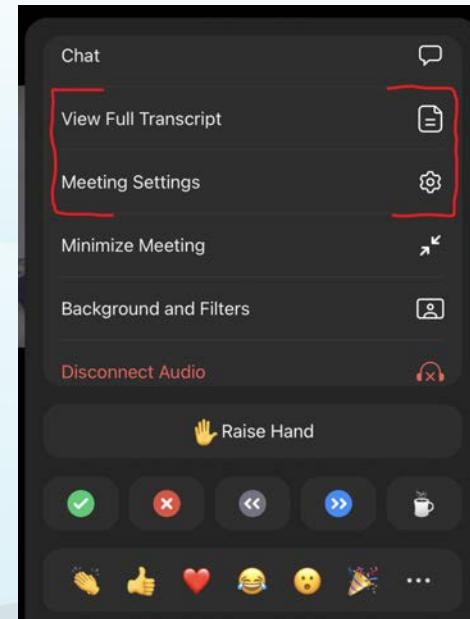
Computer Controls:

Select "CC Live Transcript" in zoom controls at the bottom of your screen



Mobile Controls:

Select "meeting settings" in mobile zoom controls. Toggle on/off Closed Captioning





welcome





operating agreements

Zoom

- Stay on mute when you're not talking
- Use chat box for questions
- Do what you need to take care of yourself





today's agenda

- Envision News
- CHW Conversations
 - Dear Pandemic - State of the Pandemic
 - CCR-2109 Washington County, MO
 - CCR-2109 Harris County, TX
- Question and Answer





who is envision?

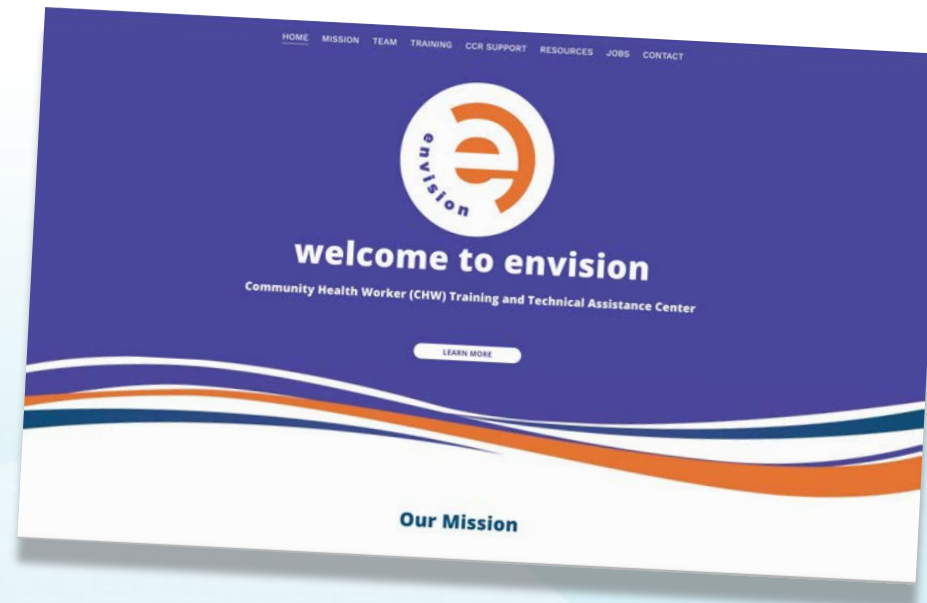
- collaboration of CHWs & allies working with CDC to elevate the role of CHWs
- supports CDC recipients to address CCR
- collective experience spans decades
- commitment to equity





envision news

**our
website
is live!**



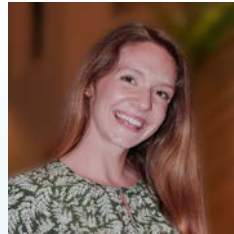
envsionequity.org



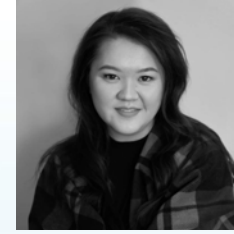
envision news - staff updates



Monique Allen
CoP Lead



SaraElise Bristol
CoT Lead



Hmongshee Khang
CHW Training Coordinator



Lanette Walker
CHW Program Consultant



Kelsey Witmeier
Evaluation Team Member



Kira Wortmann
Evaluation Manager



envision news - CHW council expansion



Timeline	
Nomination Period - CCR 2019 recipient organization complete electronic nomination form	October 4 - October 25, 2022
Application Period- nominated CHWs complete electronic application form	Deadline to submit applications is November 15, 2022
New Council Member Selection by CHW Council	November 15 - 30, 2022
New Council Members notified	November 30, 2022
Onboard new Council members	December 1 - 14, 2022



Dear Pandemic

State of the Pandemic



Pandemic present and future

October 27, 2022

Envision Webinar

Malia Jones, PhD, MPH

Assistant Professor, Community & Environmental Sociology

Dear Pandemic Co-founder and Editor-in-Chief



Outline

- State of the Pandemic
- The end of the pandemic
- Where are we headed?



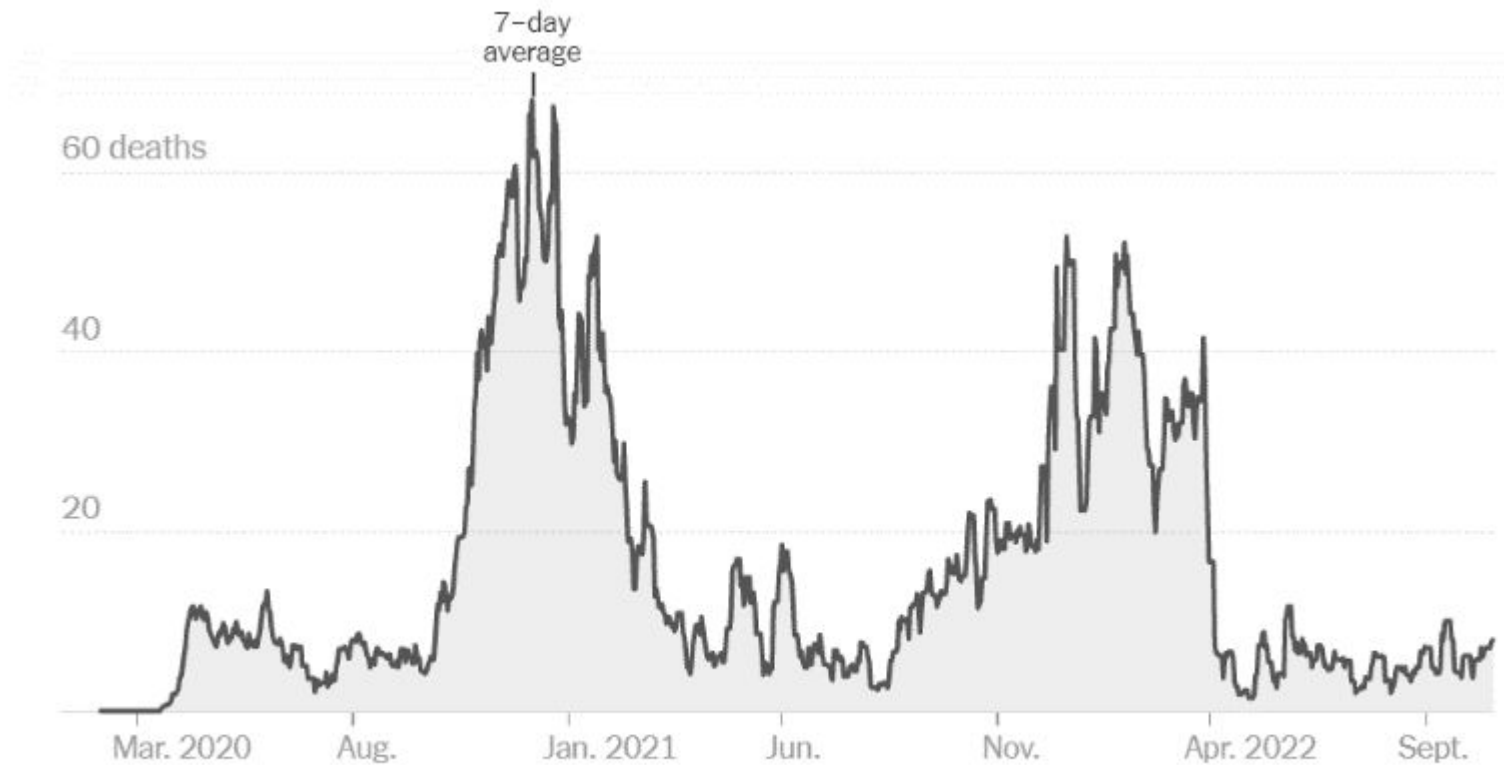
1. State of the Pandemic





Current state of the pandemic

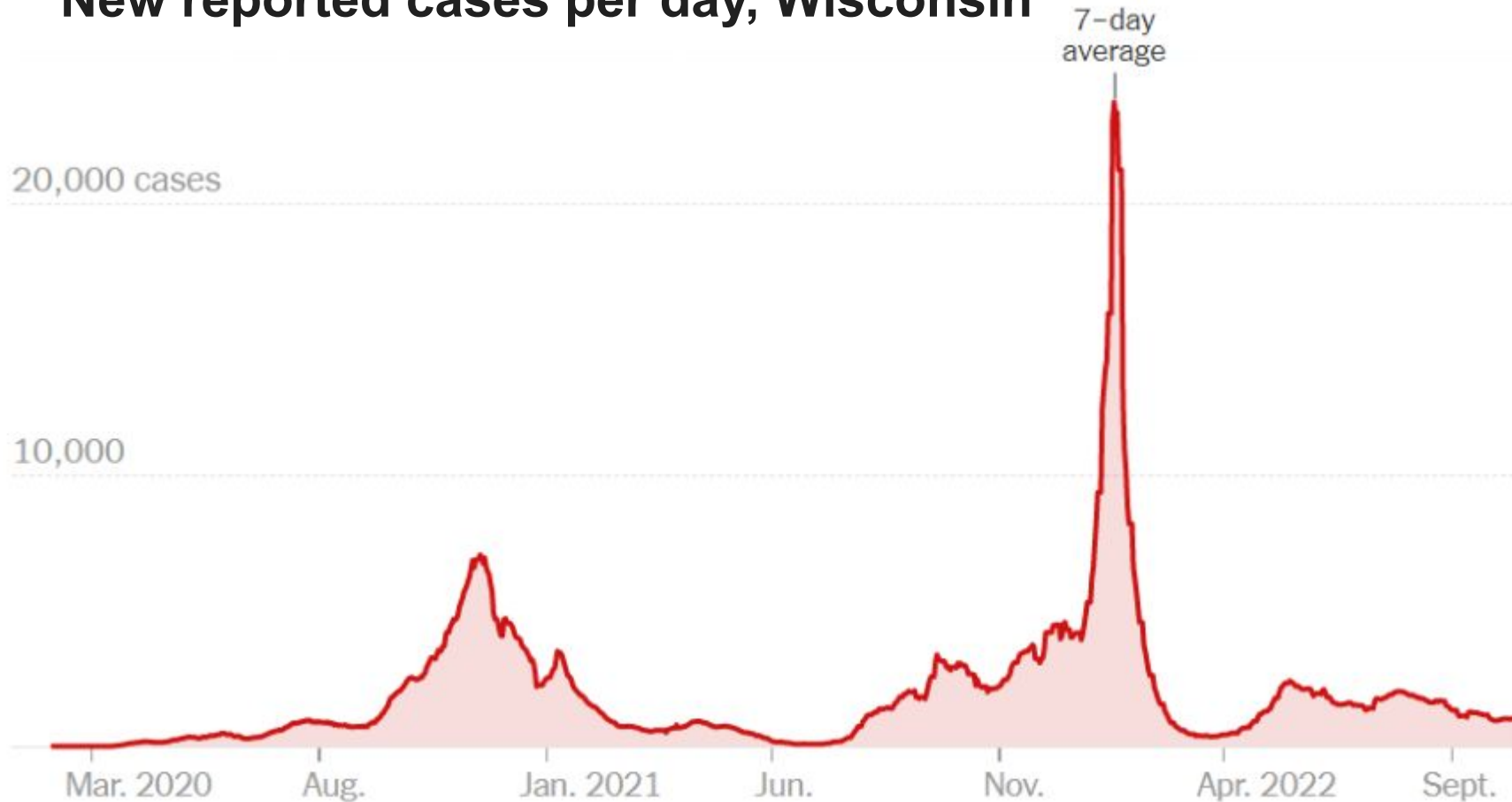
New reported COVID-19 deaths per day, Wisconsin





Current state of the pandemic

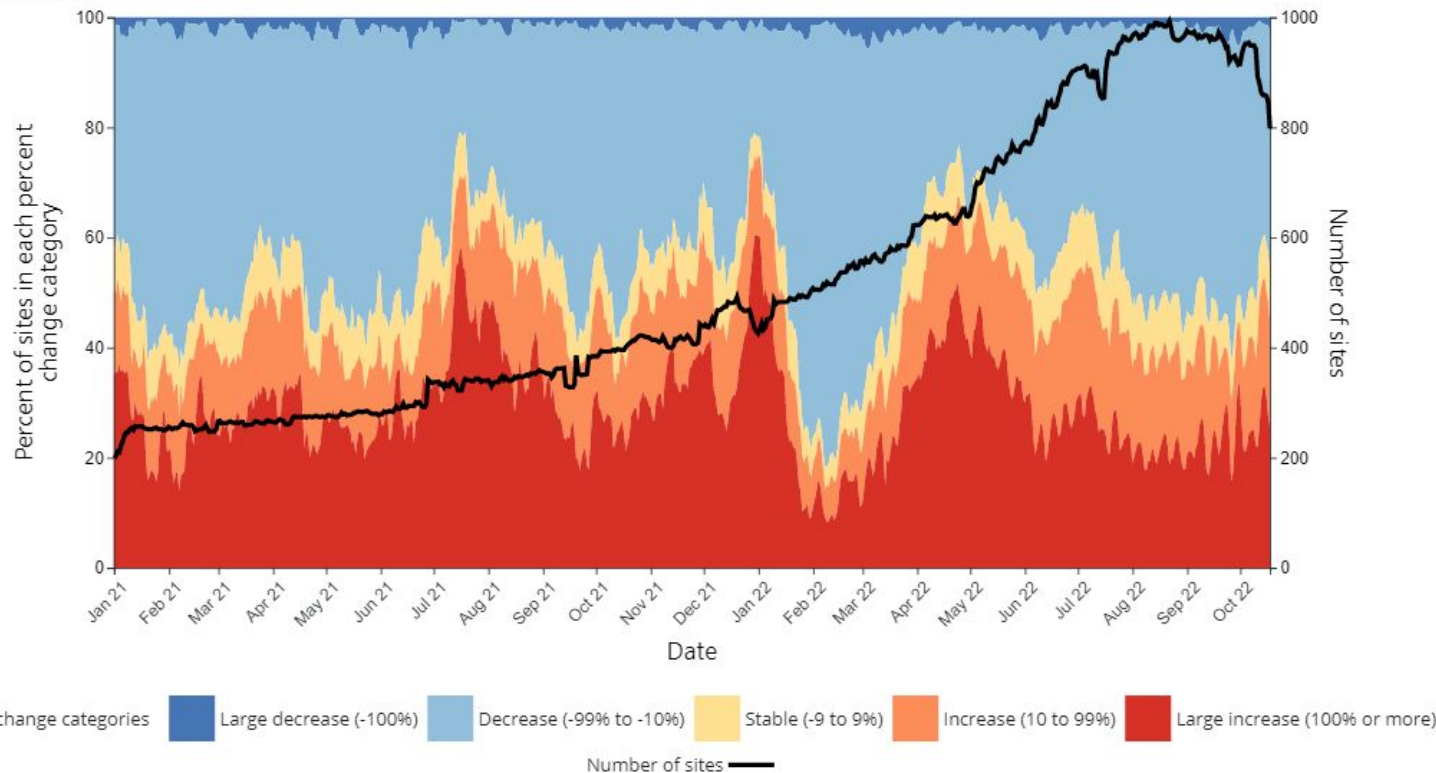
New reported cases per day, Wisconsin





Wastewater data shows sustained transmission levels since June

Percent of sites in each percent change category over time, United States





Major current challenges

- No systematic tracking of cases
- Continued vaccine hesitancy
 - Very low uptake for kids
 - Low uptake of boosters
- Lots of outstanding questions about long COVID (causes, prevalence, impacts, duration, treatments, etc.)
- Unequal treatment of COVID-19 in different settings is exacerbating structural inequalities
- Zero continued support for flexible prevention measures



2. The end of a pandemic (?)





When is a pandemic over?



Home

Emergency

19 Dec

About WHO

Emergency committees

What are the International Health Regulations?

The International Health Regulations (2005), or IHR (2005), represents a binding international legal agreement involving 196 countries across the globe, including all

العربية 中文 Français Русский

Español

WHO TEAM



Why do guidelines keep changing?



1. Because the state of the science keeps changing
2. Because the situation keeps changing

And both will keep changing for a while yet. We are still in a dynamic situation.

3.
**Where are we
headed next?**





Variants on the horizon

SARS-CoV-2 sequences by variant, Oct 24, 2022

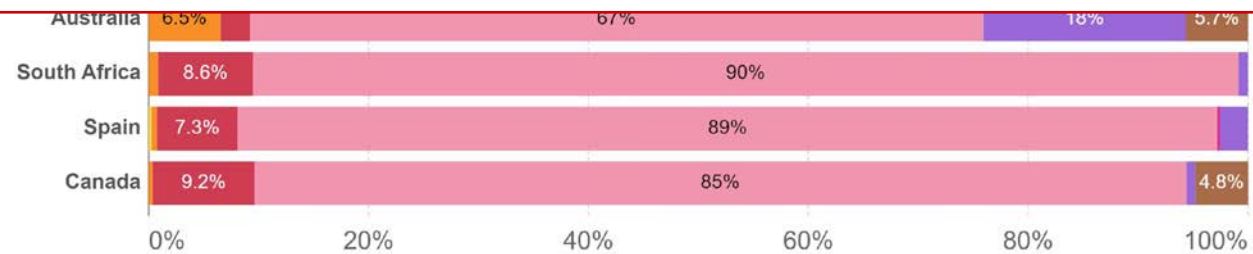
Our World
in Data

The share of analyzed sequences in the preceding two weeks that correspond to each variant group. This share may not reflect the complete breakdown of cases since only a fraction of all cases are sequenced.

■ Delta ■ Alpha ■ Beta ■ Gamma ■ Omicron (BA.1) ■ Omicron (BA.2) ■ Omicron (BA.4) ■ Omicron (BA.5)

“Delta was never going to be the last variant—and Omicron is not going to be the last one. As long as there is a COVID-19 outbreak somewhere in the world, there is going to be something new that emerges.”

– Nathan Grubach, Yale Epidemiologist



Source: GISAID, via CoVariants.org – Last updated 24 October 2022

OurWorldInData.org/coronavirus • CC BY

Note: Recently-discovered or actively-monitored variants may be overrepresented, as suspected cases of these variants are likely to be sequenced preferentially or faster than other cases.

<https://www.yalemedicine.org/news/5-things-to-know-omicron>

<https://ourworldindata.org/grapher/covid-variants-bar>



Goal: decoupling deaths and cases

• How?

1. Vaccines & boosters

- Vaccines and boosters for older adults are essential
- Kids too.

2. Beyond vaccines

- Strategic testing: test before you go to see grandma
- Masking sometimes: you don't need to get COVID-19 from strangers.

Excess mortality: Deaths from all causes compared to projection based on previous years

Our World in Data

The percentage difference between the reported number of weekly or monthly deaths in 2020–2022 and the projected number of deaths for the same period based on previous years. The reported number might not count all deaths that occurred due to incomplete coverage and delays in reporting.



Source: Human Mortality Database (2022), World Mortality Dataset (2022)

CC BY



How essential?

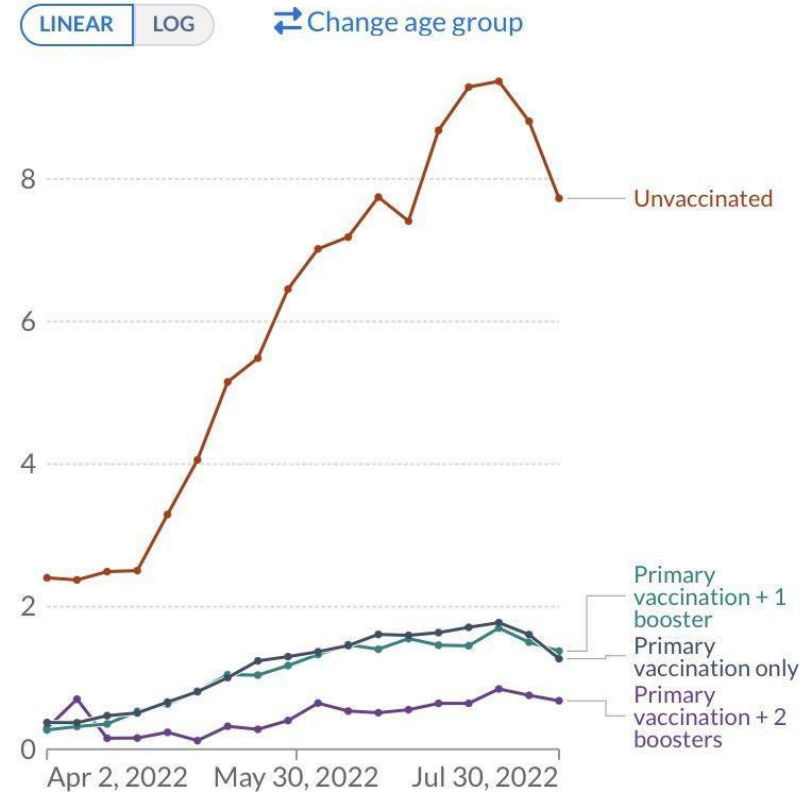
Death rates for unvaccinated Americans are 8-10 times higher compared to vaccinated Americans of the same age.

And “fully vaccinated” is not fully protected.

United States: COVID-19 weekly death rate by vaccination status, All ages

Our World in Data

Death rates are calculated as the number of deaths in each group, divided by the total number of people in this group. This is given per 100,000 people.

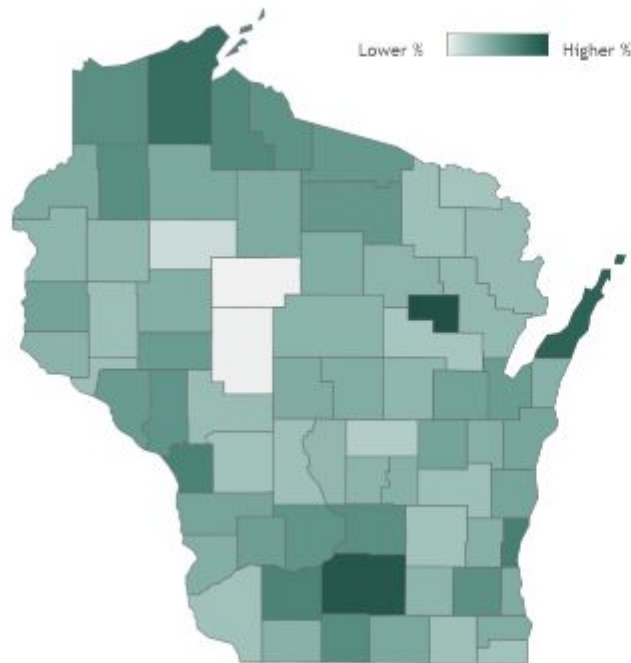


Source: CDC COVID-19 Response, Epidemiology Task Force
Note: Unvaccinated people have not received any dose. Partially-vaccinated people are excluded. The mortality rate for the 'All ages' group is age-standardized to account for the different vaccination rates of older and younger people.
OurWorldInData.org/coronavirus • CC BY

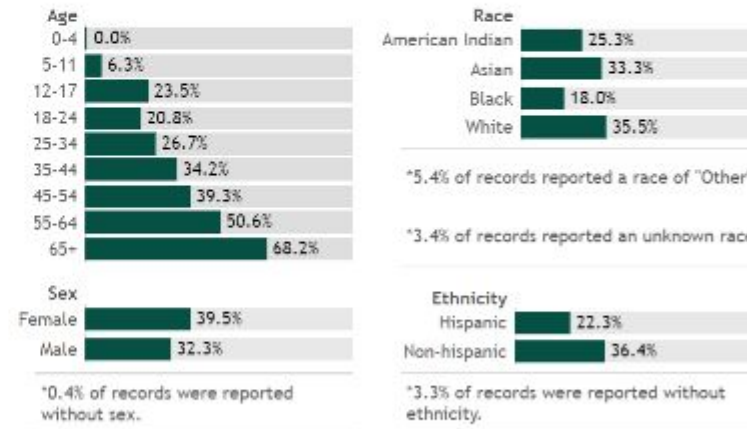


Booster uptake is very poor even in the most vulnerable groups

Click a county to filter data



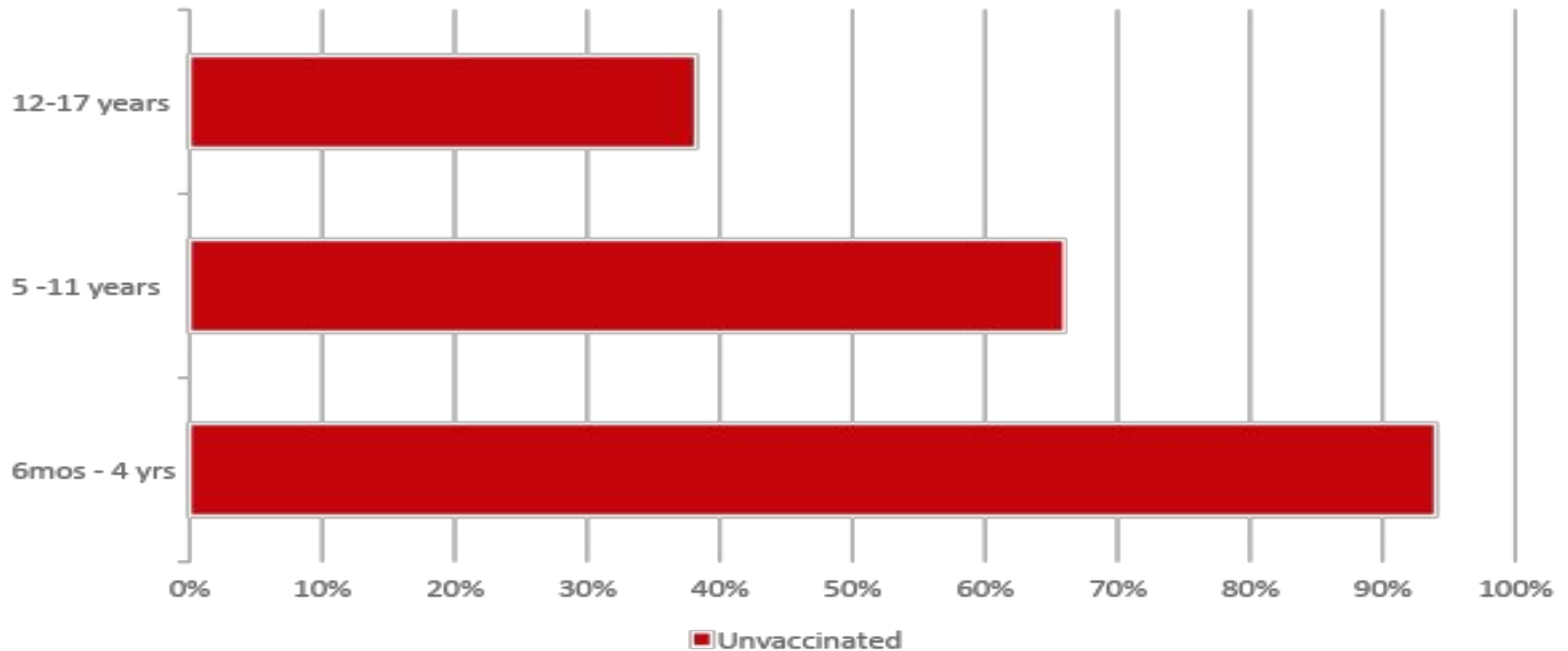
Vaccine doses for Wisconsin adults by week



[View more data on racial and ethnic disparities in Wisconsin](#)



Protecting kids also protects older adults





Long COVID could become a major public health issue

- 2% - 10% of adults who survive COVID-19 have symptoms that continue for more than a month
- Symptoms can be debilitating
- Long-run course is unknown
- That's 4,182,562 – 20,912,809 million people
(Assuming every adult in the USA eventually gets COVID-19)

State	Adult Population, 2019
California	30,617,582
Texas	21,596,071
Florida	17,247,808
New York	15,425,262
Pennsylvania	10,167,376
Illinois	9,853,946
Ohio	9,111,081
North Carolina	8,187,369
...	...
Missouri	4,766,843
Minnesota	4,336,475
South Carolina	4,037,531
Oregon	3,351,175
Oklahoma	3,004,733



More changes to guidance

- Pace of change is slowing
- Still some new things coming RE: who needs boosters? When?
- COVID-19 shots likely to become annual



Flu season is coming

CDC Reports Early Increases in Seasonal Flu Activity

[Español](#) | [Other Languages](#) | [Print](#)

October 14, 2022
overall, there
southeast and
recommends
should contin
begun, there's
significant act

This week's Flu
3.3%. The per
northwestern
followed by Re

The report als
percentage of
illness, also re

... the United States has experienced little flu for the past two seasons. Reduced population immunity, particularly among young children who may never have had flu exposure or been vaccinated, could bring about a robust return of flu. CDC is particularly concerned about drops in flu vaccine coverage in the past two years among higher risk groups, including children and pregnant people.

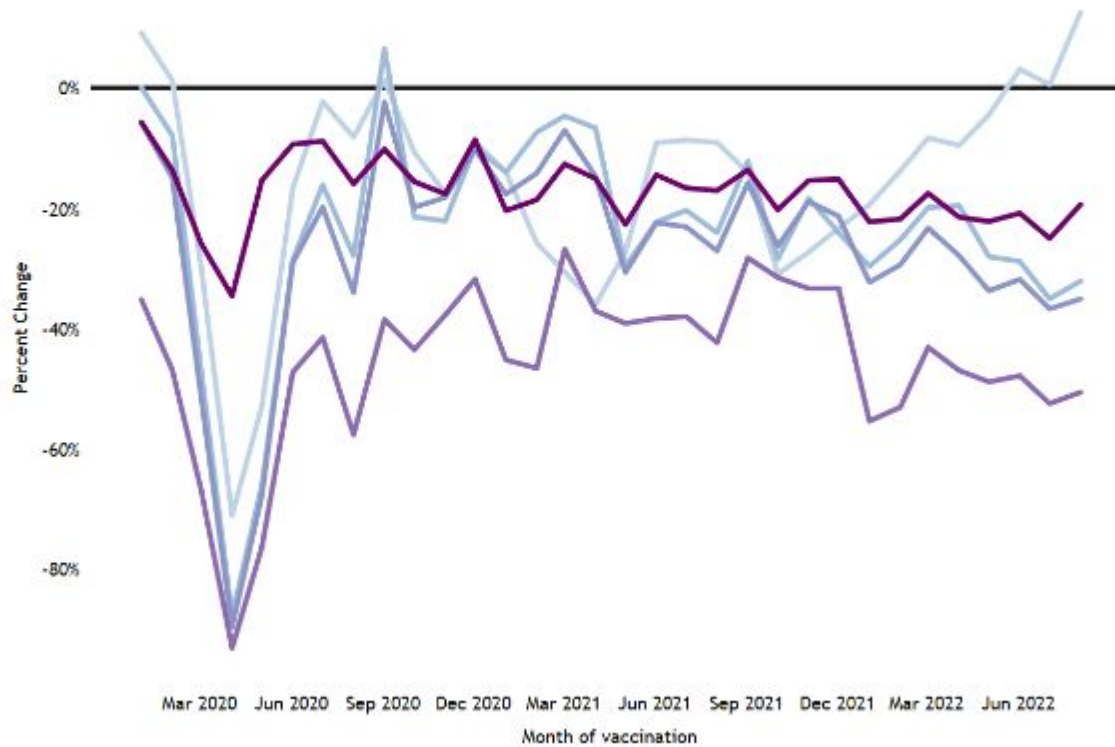
During most years, about 80% of pediatric flu deaths happen in children who have not been fully vaccinated.



Thousands of kids are behind on their other vaccines, too

- Age Group
- 0-24 months old
 - 5-6 years old
 - 5-18 years old
 - 13-18 years old
 - 19 years and older

Percent change in routinely administered vaccinations across age groups in Wisconsin





Thank you!

Learn more at www.thosenerdygirls.org

malia.jones@wisc.edu



CCR-2109

Washington County, MO

MOBILE INTEGRATED HEALTHCARE NETWORK

Battling COVID EMS & FQHC Partnership



WASHINGTON COUNTY
MOBILE INTEGRATED
HEALTHCARE NETWORK

Justin P. Duncan MPHc, BS, NRP, CCEMT-P, FP-C

Chief Executive Officer | Washington County Ambulance District

President | Missouri Emergency Medical Services Association

Chairman | Missouri State Advisory Council – MIH Subcommittee

Washington County Ambulance District | Regional Mobile Healthcare Authority

- ❖ Mineral Area College EMS Education
- ❖ Meramec Ambulance District
- ❖ Reynolds County Ambulance District

ABOUT OUR AREA

- **WCAD: 762 square miles**
 - Rural Setting
 - Socioeconomic Factors
 - Health Literacy Factors
 - Compliance Factors
- **Expanded coverage to ~1,500 square miles**
 - Reynolds County
 - Dent County (partial)
 - Franklin County (partial)
 - Jefferson County (partial)
 - St. Louis (partial)

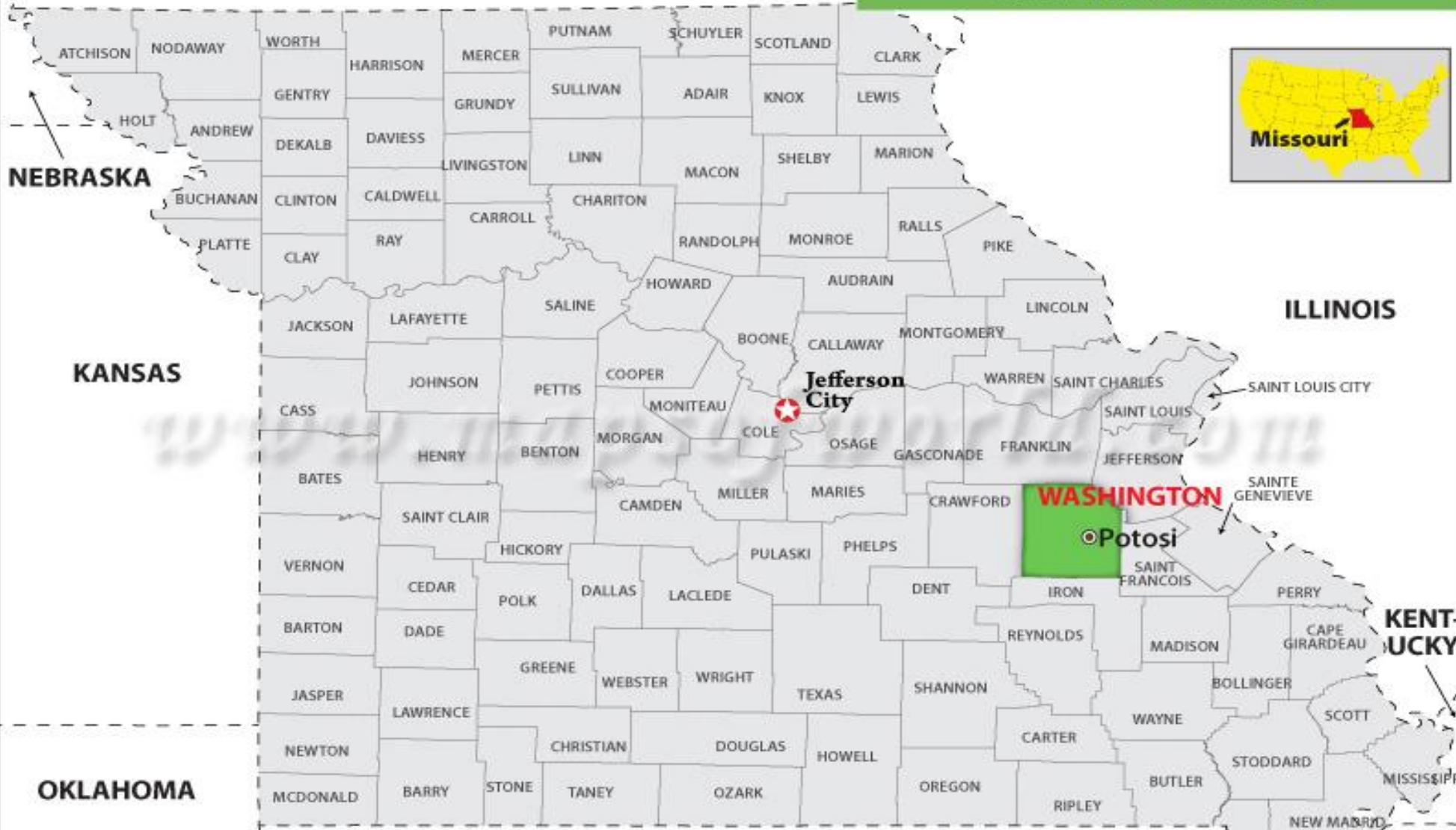




IOWA

WASHINGTON COUNTY MAP

Located in Missouri



LEGEND

- - - State Boundary
- County Boundary
- ★ State Capital
- County Seat

0 12.5 25 50 75 100 Miles

Copyright © 2016 www.mapsofworld.com
(Updated on 2nd August, 2016)



WASHINGTON COUNTY
**MOBILE INTEGRATED
HEALTHCARE NETWORK**

OVERVIEW OF OUR MIH MODEL



Utilize Community Paramedics and Community Health Workers to care for patients in their home.



Community Paramedics serve as the bridge between the patient and the clinic provider



Help prevent inappropriate or overutilization of high-cost emergency medical services or hospital EDs



Connect patients to Community Health Workers who help link them to needed resources to support good health

MIHN PROGRAM

GOALS

We Know:

- Sick people don't manage their conditions well
- Sick people give up and have poor follow through
- Compliance is poor in our chronically ill
- EDs are utilized for primary care
- Paramedic Services/911 are utilized for primary care

We Hope To:

- Improve Quality of Life
- Close Care GAP's
- Reduce Morbidity and Mortality
- Save the System Money
- Advocate for Innovation

MIH AND COVID-19

- **We came together for common good: Paramedic Service / Public Health Department / FQHC / Hospital / Local Government**
- **In-home COVID-19 swabs for those that can't/won't get out**
- **In-home Monoclonal Infusions**
- **In-home vaccinations (FLU, COVID, etc.**
- **In-home lab draws for all local clinic groups for those that can't/won't get out**
- **Wellness checks for missed appointments for all local clinics**
- **COVID-19 “assessments” in-home based on concerns of**
 - **Public Health**
 - **Clinics**
 - **Patient**
- **COVID-19 vaccination clinics with Public Health / FQHC / Hospital**

COMMUNITY COVID RESPONSE



GOAL = Identify COVID positive patients
□ RAPID Swabbing 5 days / week

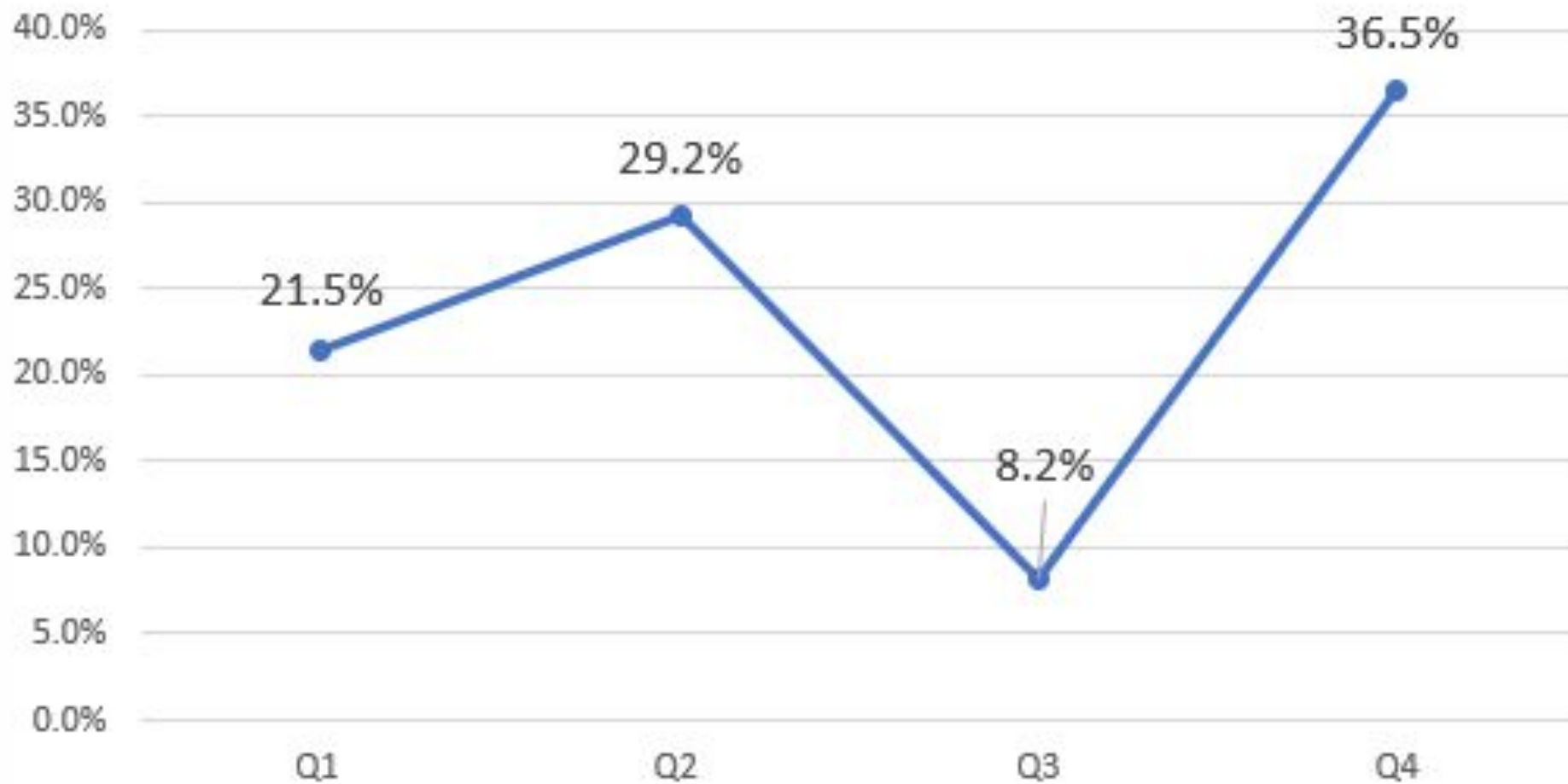
GOAL = Provide treatment for COVID positive patients
□ mAB treatments

GOAL = Provide wellness checks for COVID positive patients
□ Public Health = primary referral source

GOAL = Get shots in arms!

COVID Testing

Percent Positive (September 2021 - August 2023)



MAKING A DIFFERENCE



**18,000
Vaccines
Administered
in 2020**







WASHINGTON COUNTY HEALTH DEPARTMENT

will be hosting a drive thru **FLU** and **COVID-19** Vaccine Clinic
for Adults 65 & Older at the

**WASHINGTON COUNTY
AMBULANCE DISTRICT
TUESDAY, OCTOBER 12, 2021
9 AM – 3 PM**

To pre-register
**Please call 573-438-2164
Option 2**



520 Purcell Drive
Potosi, Mo. 63664
573-438-2164

www.wcmohealth.org

Follow us on Facebook @WCHD63664
Washington County, MO
Health Department





FREE FLU SHOTS

**SPONSORED BY
BELGRADE STATE BANK**

**Sunday, November 1
11 a.m. – 2 p.m.**

**Location: Belgrade State
Bank, Belgrade Branch**

Shots will be administered by the
Washington County Ambulance District.

WashCo Residents: If you are unable to get transportation, we will send someone to your home. Please call 573-766-5315 to schedule.



Belgrade State Bank
Member FDIC



CP VEHICLE | MIH-1



NON-CLINICAL PROGRAM

- Home Safety
- Social Determinants of Health
 - Food, Shelter, Water, Medications
- Health Literacy
- Environmental and Safety Risks
- Medicaid Enrollment
 - Recently expanded in MO

BY THE NUMBERS

Total MIH Encounters 2021

- 7,000

CP's on Staff

- 2 Full-Time
- 2 Half-Time
- 10 PRN

CHW's on Staff

- 10

Statewide Growth

- *Next Slide*

SUCCESS STORIES

Right Care. Right Place. Right Time.



GET SWABBED – No QUESTIONS

To this day: Rapid Swab 5 days a week.

Can't come to us? We will come to you!



WE'RE HERE WHEN YOU'RE READY

MIH visit for a lab draw?

- *Talk about COVID!*

MIH visit for telehealth visit?

- *Talk about COVID!*

Setting up at a health fair?

- *Talk about COVID!*

Can't make it after work?

- *After hours available!*

Can't get out?

- *We will come to you!*



HOME TESTS

Education (lessons learned)

Reporting ask

Due to the global COVID-19 pandemic,
it is vitally important to have good data.

PLEASE HELP!

IF YOU...

take a home test and your test is positive, please self-report the results. To do this, simply click on this link and fill in the requested information <https://washco-covid19.com/self-reporting/> or follow this QR code:



SCAN ME

To view the most recent local information on COVID-19,
visit: <https://washco-covid19.com/>

MONOCLONAL INFUSIONS

Over 500 infusions in the first cohort studied during the omicron surge

1 death after infusion (severe COVID)

499 avoided ED visits and avoided hospital admissions



PUBLIC HEALTH REFERRAL

Every COVID positive report to PH was referred to our MIH program:

- CHW follow-up for high-risk populations
- CP follow-up for care as needed
- Offered assessment, swabs, infusion and vaccines



WASHINGTON COUNTY AMBULANCE DISTRICT

6900 BILL GUM BUSINESS BLVD.
POTOSI, MISSOURI 63660
OFFICE: 573-438-3635



COVID-19 Services Offered

Are you COVID positive and need an in-home COVID swab for your family?

- We can come to your home and do rapid testing with results in 15 minutes
- We can come to your home and do send-off testing as needed

Are you COVID positive and just want checked out?

- We can complete a non-emergency / scheduled assessment with vital sign checks in place of an emergency response
- We can help arrange further evaluation by your primary care provider
- If you don't have a primary care provider, we can help you become established with one
- If you are a Great Mines Health Center patient, we can facilitate a telehealth visit with our MIH Clinician, you and a provider at Great Mines
- If it is discovered that you need emergency care, we can begin treating you immediately and facilitate transport to an Emergency Department

Do you need an in-home COVID vaccine?

- Once you are recovered completely from COVID and wait a short period of time, you are eligible for the vaccine
- If your family hasn't been exposed, they may be eligible now for the vaccine

For more information, or to schedule an in-home visit by one of our Mobile Integrated Healthcare Clinicians, please contact us!

Washington County Ambulance District & Great Mines Health Center
Mobile Integrated Healthcare Team
[573-438-3635](tel:573-438-3635)



In case of emergency, please call 9-1-1!



MAKE IT EASY

WASHINGTON COUNTY EMERGENCY OPERATIONS CENTER IS A COLLABORATIVE TEAM MADE UP OF:
WASHINGTON COUNTY HEALTH DEPARTMENT, WASHINGTON COUNTY AMBULANCE DISTRICT, WASHINGTON COUNTY
MEMORIAL HOSPITAL, GREAT MINES HEALTH CENTER, WASHINGTON COUNTY COMMISSIONERS, WASHINGTON
COUNTY SHERIFF'S DEPARTMENT, POTOSI POLICE DEPARTMENT, AND THE CITY OF POTOSI.



IT'S UP TO YOU

THE COVID VACCINE IS READILY AVAILABLE AT:
WASHINGTON COUNTY HEALTH DEPARTMENT - 573-438-2164

GREAT MINES HEALTH CENTER - 573-438-9355

PHARMAX PHARMACY – 573-438-2189

WAL MART – 573-438-3387

THE AMBULANCE DISTRICT CAN EVEN COME TO YOU IF TRANSPORTATION IS AN ISSUE.
573-438-3635



PERSONAL STORIES

One on One conversations

Drive it home

Discuss death

Discuss long term complications

Offer | Don't Judge | We're Here



COVID-19 - Mortality

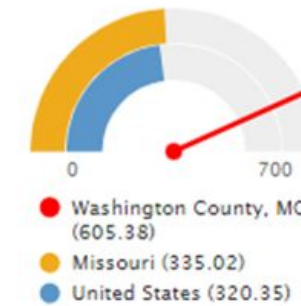
In the report area, there have been 151 total deaths among patients with confirmed cases of the coronavirus disease COVID-19. The mortality rate in the report area is 605.38 per 100,000 population, which is greater than the state average of 335.02. Data are current as of 10/25/2022.

Report Area	Total Population	Total Deaths	Deaths, Rate per 100,000 Population	Last Update
Washington County, MO	24,943	151	605.38	10/25/2022
Rural Missouri	804,589	3,871	481.12	10/25/2022
Missouri	6,126,452	20,525	335.02	10/25/2022
United States	326,262,499	1,045,178	320.35	10/25/2022

Note: This indicator is compared to the state average.

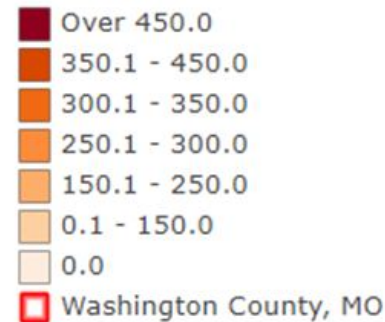
Data Source: Johns Hopkins University. Accessed via ESRI. Additional data analysis by CARES. 2022. Source geography: County → [Show more details](#)

COVID-19 Deaths, Crude Rate per 100,000 Population

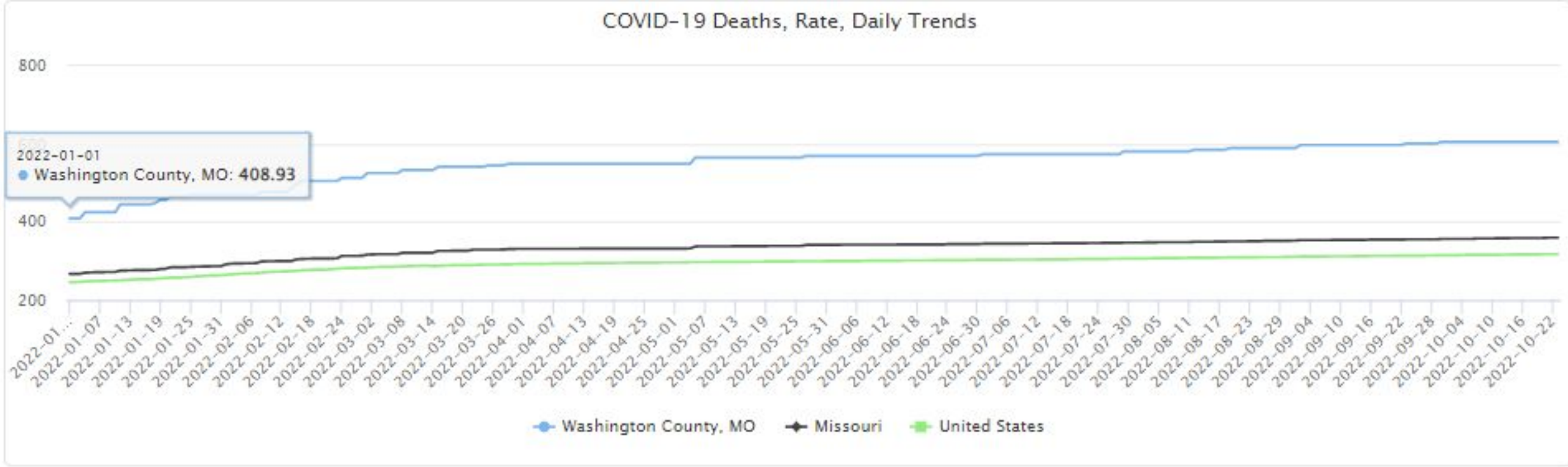


[View larger map](#)

COVID-19 Deaths, Rate per 100,000 by County, Johns Hopkins 2022



The chart below displays local, state, and national trends in the cumulative rate of COVID-19 deaths per 100,000 total population.



MOBILE INTEGRATED HEALTHCARE NETWORK

Thank you!

jduncan@wcadems.org



WASHINGTON COUNTY
MOBILE INTEGRATED
HEALTHCARE NETWORK



CCR-2109 Harris County, TX



Harris County

Public Health

Building a Healthy Community

Living in a world with COVID

CHW conversations from HCPH



[HCPHTX.ORG](https://www.hcphtx.org)





HARRIS COUNTY: **BIG DIVERSE & COMPLEX**

Harris County is the third most populous county with over 4.7 million people spread over 1,778 square miles.

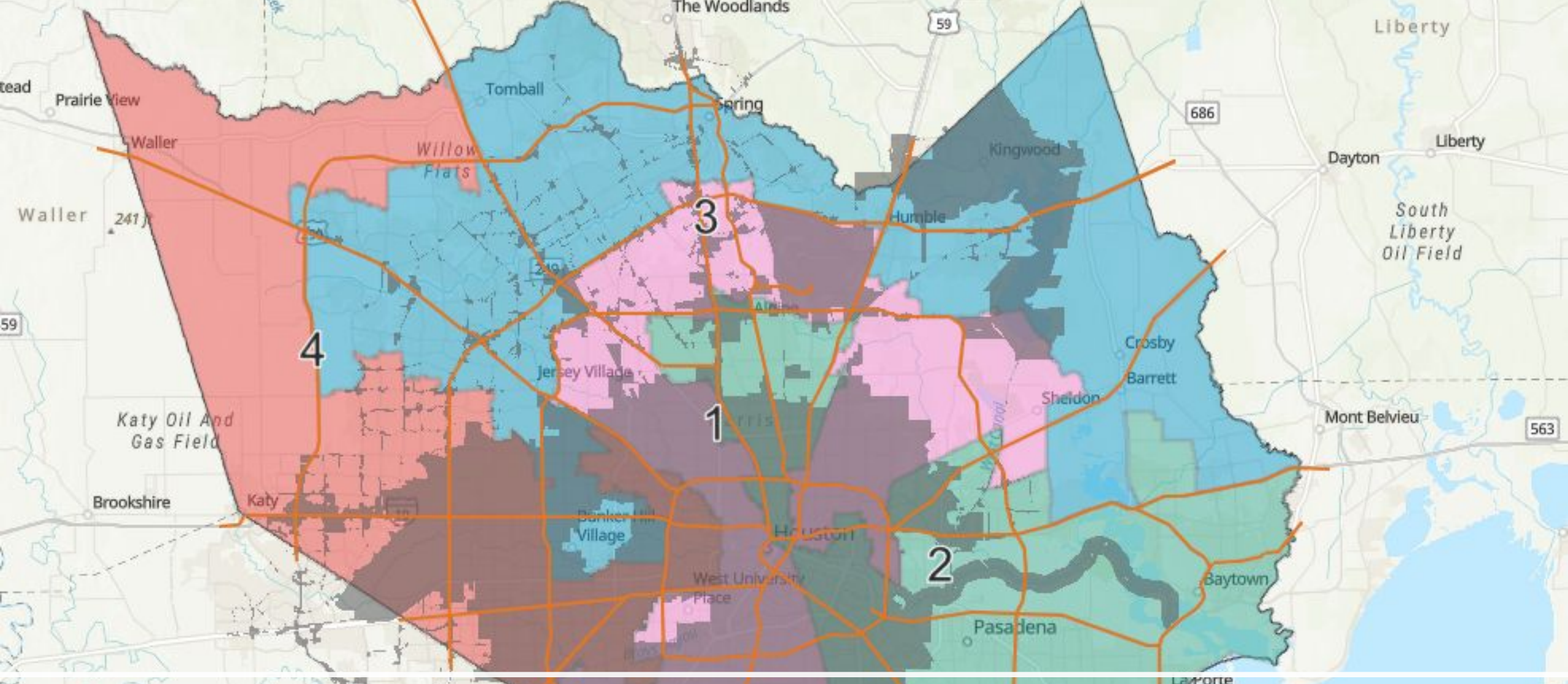
Harris County Public Health



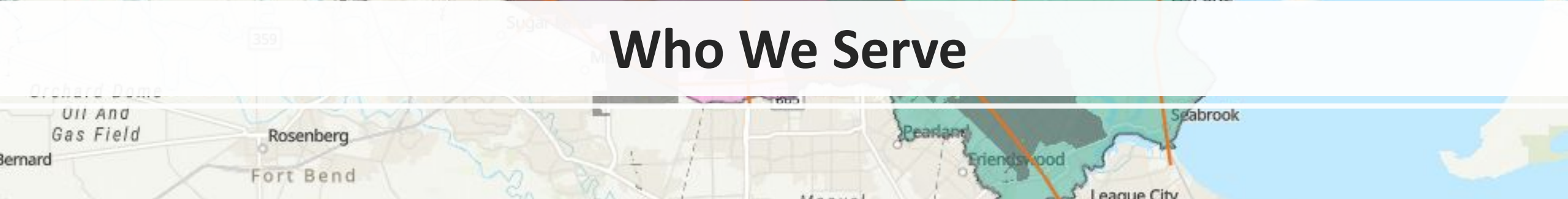
HCPHTX.ORG

What is Harris County Public Health (HCPH)?

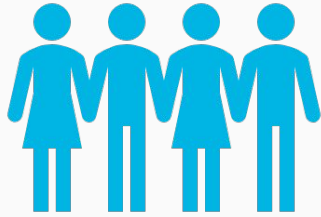
- HCPH is the county health department for Harris County and provides comprehensive health services and programs to the community
- Dedicated to improving the health and well-being of Harris County residents and the communities in which they live, learn, work, worship, and play
- Serves a diverse community of approximately 2.3 million people (not including the City of Houston)
- Responded to various public health concerns and emergencies such as rabies, mosquito-borne illnesses, air and water pollution, disease outbreaks, water and food-borne illnesses, natural disasters, tuberculosis, polio and other diseases



Who We Serve



Harris County Demographics



4.7+ Million

11.9%

Linguistic Isolation

- Hispanic/Latino
- Black/African American
- White/Non-Hispanic
- Asian



Specializing Our Engagement Strategies

How should our approaches in finding locations for our team change based on the locations needs?

COVID-19 Hot-Spots

High SVI (Social
Vulnerability Index)

Low Vaccination Rate

Addressing Vaccine Hesitancy

Hesitation comes from many sources:

Concerns for one's health and wellbeing

Medical and governmental mistrust

Religious beliefs and oppositions

Ideological and/or political beliefs

Populations in Harris County that have disproportionately low vaccination rates:

- Children
- Hispanic/LatinX people
- Black/African American people
- People 20-29 years old
- East Harris County/Rural Areas

Helpful Conversational Tools



Provide Emotional Support



Acknowledge Uncertain Risks



Talk About Known Risks



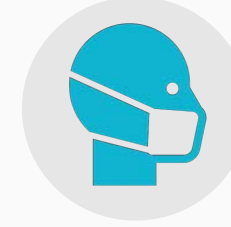
Provide Information



Partner with Communities



Share Your Experiences



Tap Into People's Desire to Protect

Engagement Skills

- Seek people out
- Be present and engaged
- Actively listen
- Strive for deeper conversations



OUTREACH MATERIALS

- COVID Care Kits and postcards
 - Continuously update materials and rely on CHW feedback to tailor resources to address community needs
- PPE
- Promotional items

Harris County Public Health
Building a Healthy Community
HCPHTX.ORG

Use your phone camera to scan the QR code to find more COVID information and resources. Or visit bit.ly/HCPHTXCOVID

PROTECT YOURSELF AND OTHERS FROM COVID-19

Steps if You Have Been Exposed to Someone with COVID-19

- Watch for symptoms for 10 days
- Wear a mask around others for 10 days
- Test 5 days after exposure (or sooner if you have symptoms)
- Take extra safety steps for 10 days if you will be around people who are more likely to get very sick from COVID. For example, social distance, gather outside or open a window.

Steps if You Test Positive

DAY 0 Days 0 – 6: Everyone should stay home and away from others (isolate). People at high risk for severe COVID illness should seek treatment.

DAY 6 End isolation if you never had symptoms or if you are fever-free for 24 hours and other symptoms have improved. Stay home past day 6 if you still feel sick.

DAY 11 Days 6 – 10: Everyone should wear a mask around others and avoid people at high risk for severe COVID-19 illness. Or if you take 2 at-home tests (48 hours apart) and test negative both times, you can stop wearing a mask.

COVID-19 VACCINES Stay up to date on COVID vaccines & boosters for the best protection. FREE COVID-19 Vaccine/Booster Appointments: Vaxstrack.hctx.net or call 832-927-6787.	COVID-19 TESTS Get tested if you have symptoms or have been exposed. FREE COVID-19 Test Appointments: Covidcheck.hctx.net or call 832-927-7575.	COVID-19 TREATMENT If you test positive, talk to a doctor as soon as possible about treatment options. Treatment medications must be taken within 5 days of first COVID symptoms. Visit COVID.gov to find treatment providers near you.	COVID-19 MASKS Masks provide extra protection against COVID-19 and new variants. It is safest to wear a mask in indoor public places, even if you are vaccinated. Check with stores/pharmacies in your area to find free N95 masks.
---	---	--	---

NEED TO APPLY FOR FOOD, FINANCIAL, OR MEDICAL ASSISTANCE?

HCPH Connect can help apply for programs such as SNAP, WIC, TANF, CHIP, Medicaid/Medicare, and the Harris Health System's Financial Assistance Program.

To get connected, call 832-927-7946 or email HCPHConnect@phs.hctx.net.
*Please leave a detailed voicemail with your name and contact information. Our team will call you back within 3 business days.

Need help with something else? Our Connectors can help find other resources in your community such as food pantries, free or low-cost clinics, mental health services, legal assistance and more!

Scan to find more community resources!
Or visit bit.ly/24rOxDt

Comparing COVID-19 Vaccines & Boosters

	Pfizer (mRNA vaccine)	Moderna (mRNA vaccine)	Novavax (Protein-based vaccine)
Primary Series	<ul style="list-style-type: none"> • Ages 6 months – 4 years <ul style="list-style-type: none"> ○ 3 doses total (2 doses given 3 – 8 weeks apart + a 3rd dose at least 2 months after) • Ages 5+ <ul style="list-style-type: none"> ○ 2 doses, 3 – 8 weeks apart • *If immunocompromised, get the 2nd dose 3 weeks after the 1st dose 	<ul style="list-style-type: none"> • Ages 6 months+ <ul style="list-style-type: none"> ○ 2 doses, 4 – 8 weeks apart • *If immunocompromised, get the 2nd dose 4 weeks after the 1st dose 	<ul style="list-style-type: none"> • Ages 12+ <ul style="list-style-type: none"> • 2 doses, 3 – 8 weeks apart • *If immunocompromised, get the 2nd dose 3 weeks after the 1st dose
Additional Dose	<ul style="list-style-type: none"> • Ages 5+ (only for immunocompromised) • 28 days after 2nd dose 	<ul style="list-style-type: none"> • Ages 6 months+ (only for immunocompromised) • 28 days after 2nd dose 	<ul style="list-style-type: none"> • No additional dose
Updated Booster (Omicron/Bivalent)	<ul style="list-style-type: none"> • Ages 5+ at least 2 months after primary series or last booster 	<ul style="list-style-type: none"> • Ages 6+ at least 2 months after primary series or last booster • Children 5 years old who got the Moderna primary series must get the Pfizer updated booster 	<ul style="list-style-type: none"> • Ages 5+ can get the Pfizer updated booster at least 2 months after primary series • Ages 6+ can get the Pfizer or Moderna updated booster at least 2 months after primary series • Ages 18+ can get the Novavax monovalent booster at least 6 months after their primary series if they have not already received a booster. The Novavax monovalent booster is for those that can not or will not receive an mRNA vaccine.

Community Resource List

COMMUNITY RESOURCES IN HARRIS COUNTY

Harris County Public Health updates a list of community resources each month to help you easily find resources based on you or your family's needs. The list has a wide variety of local resources and services in the community, including:

- Food assistance
- Financial assistance
- Mental health services
- Domestic violence and sexual assault resources
- General information/resources
- Transportation assistance
- Health/Dental Clinics
- Refugee and immigration assistance
- Shelters
- Senior Resources
- Child education and childcare services
- Job assistance/training



or visit bit.ly/HCPHCommunityResources
(*web address is case sensitive)

Use your phone camera to scan the code to find the list of resources
If you have questions or need help finding other resources, call
832-927-7946



Harris County
Public Health
Building a Healthy Community

f t i d y
HCPHTX.ORG



PHTX.ORG

HCPH Connect: Resource Navigation Assistance



SNAP (Food Benefits)

Helps families and individuals to buy food for good health.



Healthy Texas Women (Ages 15 - 44)

Helps women pay for health exams, screenings, and birth control.



TANF (Cash Help)

Helps pay for food, clothing, and housing costs for families with children 18 years or younger.



Financial Assistance Program (Gold Card)

Harris County's **healthcare** financial assistance for low-income Harris County residents.



Health Care (Medicaid, Medicare, CHIP)

Helps pay for medical bills and medications.



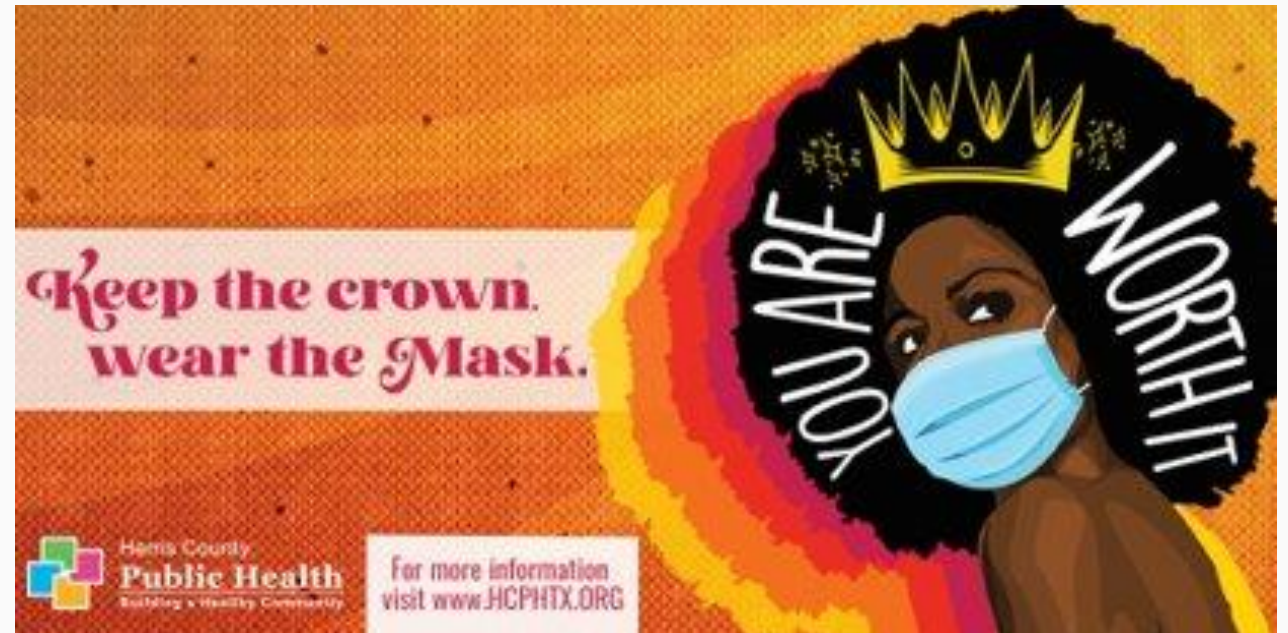
The Affordable Connectivity Program (ACP)

Government program that helps many low-income households pay for broadband service and internet connected devices.

COVID-19 Taskforces

Groups dedicated to researching and engaging partners, locations/events, and businesses that could help extend our reach into target demographics.

- Superheroes (children 6mo –17 yrs)
- Young Adult
- East/Rural Harris County
- Hispanic
- Black/African American
- HIDDEN





Thank you for your time!



Q&A

drop questions in the chat or raise your hand
if you have a question for our panelists



our next webinar

- holiday schedule
- December 8, 1:30 PST, 12:30 CST, 10:30 PST
- Subject *****
- Register now - link in the chat



wrap up

- Satisfaction poll instructions
- Materials will be sent out in a follow-up email
- Also accessible via AMP, Envision website, or YouTube



thank you

